

伊豆半島産オトヒメダニ属(ササラダニ類)の1新種

誌名	Edaphologia
ISSN	03891445
著者	勝又, 肇
巻/号	39号
掲載ページ	p. 25-28
発行年月	1988年10月

農林水産省 農林水産技術会議事務局筑波産学連携支援センター
Tsukuba Business-Academia Cooperation Support Center, Agriculture, Forestry and Fisheries Research Council
Secretariat



A NEW SPECIES OF THE GENUS *SCHELORIBATES* FROM THE
IZU PENINSULA (ORIBATIDA : SCHELORIBATIDAE)

Hajime KATSUMATA*

伊豆半島産オトヒメダニ属 (ササラダニ類) の 1 新種

勝 又 肇*

Synopsis *Scheloribates dentatus* sp. nov. is described from the Izu Peninsula, Central Japan. It is different from the other known species of the genus in the trochanter IV with a prominent tooth, the complete custodium and the leg chaetotaxy (genu I and tarsus I).

Introduction

Six species of the genus *Scheloribates* have so far been described or recorded from Japan (AOKI, 1962, '84; FUJITA & FUJIKAWA, 1987), but many species still remain undetermined. One of the species examined in the course of my taxonomic study proved new to science. It is described here based on the specimens collected on the Izu Peninsula.

Before going further, I heartily thank Prof. J. AOKI, Yokohama National University, for his guidance and kindly reading through the manuscript. Thanks are also due to Prof. H. TAMURA, Ibaraki University, for his advice.

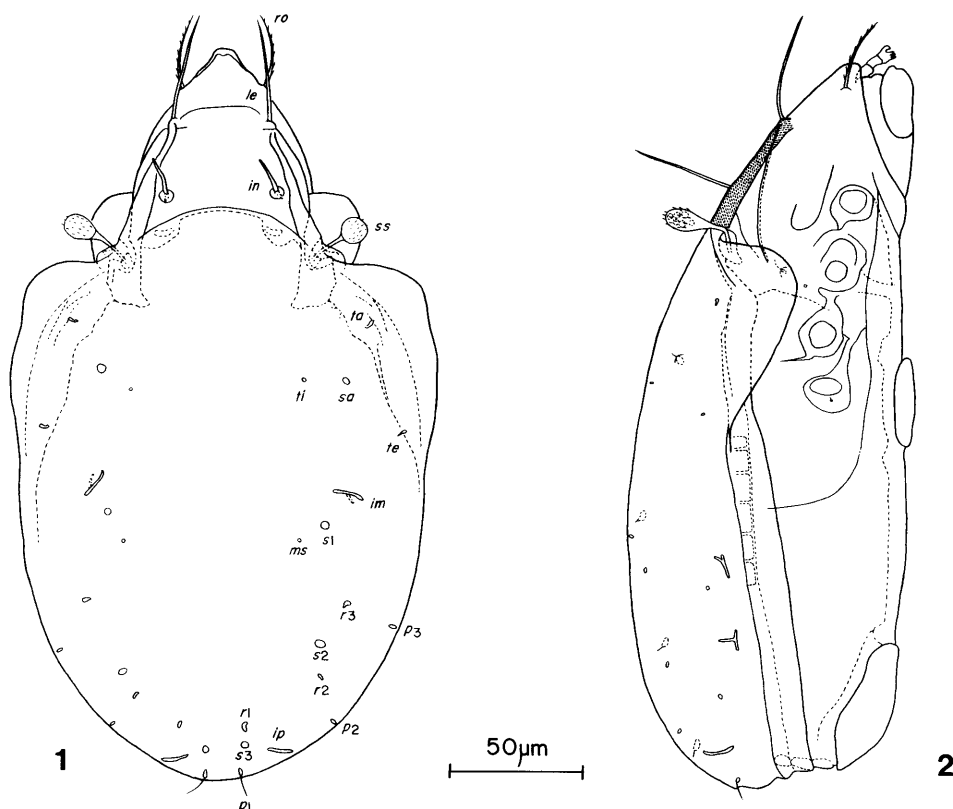
***Scheloribates dentatus* sp. nov.**

Body length, 275.3 (272-280) μm in male, 289.3 (276-304) μm in female; body width, 154 (148-160) μm in male, 161.3 (156-172) μm in female.

Prodorsum: Rostral tip trapezoidal. Prolamellar ridges absent (Fig. 2). Transverse prolamellar line present; translamellar line very short. Seta *ro* inserted laterally, weakly curved inward and barbed on outer side. Setae *in* and *le* slightly barbed and nearly equal in length. Sensillus club-shaped with a short peduncle, not reaching lateral margin of pteromorph; oval head directed upward and minutely barbed on entire surface (Fig. 8). Exobothridial setae short.

* Department of Biology, Faculty of Science, Ibaraki University, Mito 310, Japan

* 茨城大学理学部生物学教室



Figs. 1-2. *Schelorbates dentatus* sp. nov. 1, Dorsal view; 2, Lateral view.

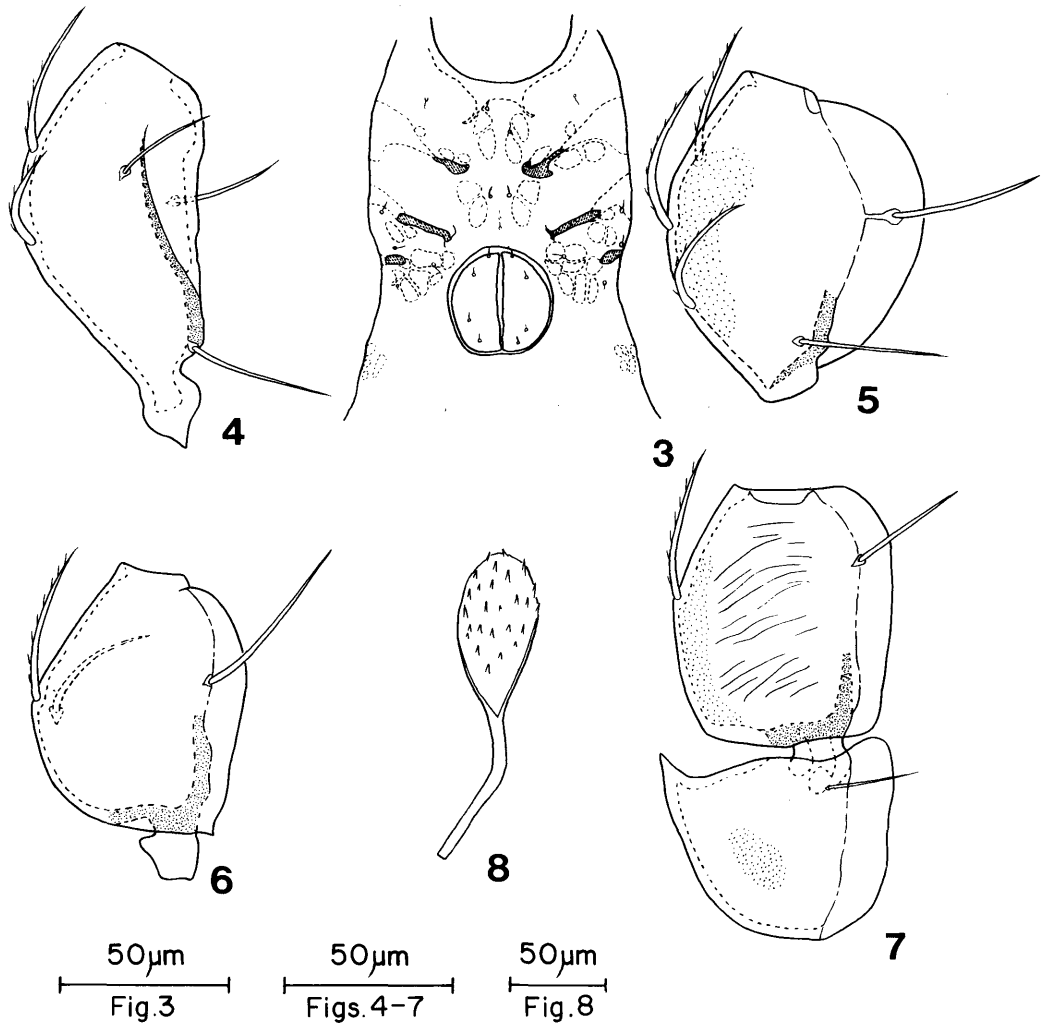
Notogaster: Ten pairs of pores for notogastral setae. Four pairs of sacculi small and rounded. Lyrifissures *im* and *ip* long; *ih* and *ips* short, *ih* in front of p_3 , *ips* between p_2 and p_3 (Fig.2).

Ventral side: Apodemat III very short (Fig.3). Epimeral setae $3a$ mostly arranged longitudinally, but occasionally transversely. Genital setae g_3 and g_4 remote from g_1 and g_2 . Custodium complete, reaching *bvp*.

Legs: All legs tridactyle. Leg chaetotaxy (excluding solenidia): I(5-2-4-18), II(5-2-4-15), III(2-3-1-3-15), IV(1-2-2-3-12); solenidiotaxy: I(1-2-2), II(1-1-2), III(1-1-0), IV(0-1-0). Dorsodistal margin of trochanter IV with a prominent sharp tooth (Figs. 7 and 9). Keel well developed on femora II-IV and trochanter IV (Figs. 4-7); distal corner of keel on trochanter IV bluntly angulate; proximal corner of keel on femur III pointed (Fig. 6). Femur I with a strong, longitudinal ridge (Fig. 4).

Material examined. Holotype [National Science Museum (Nat. Hist.), Tokyo: ♂, Matsuzaki-cho, Kamo-gun, Shizuoka Pref., 21-V-1986, H. KATSUMATA leg. Paratypes: ♂, ♀, same data as holotype; 3♂, 2♀, same locality as holotype, 13-XI-1987, M. KOBAYASHI leg.

Remarks. The species described above is similar to *Schelorbates parvus* PLETZEN, 1963 from South Africa, but distinguished from the latter by the presence of sharp tooth on the



Figs. 3-8. *Scheloribates dentatus* sp. nov. 3, Epimeral and genital regions; 4, Femur I; 5, Femur II; 6, Femur III; 7, Femur and trochanter IV; 8, Sensillus.

dorsodistal margin of trochanter IV, the presence of short translamellar line on prodorsum, and smaller body size.

It also resembles *S. rigidisetosus* WILLMANN, 1951 from Austria, but differs from the latter in the club-shaped sensillus with oval head instead of being truncated at the tip and smaller body size.

摘 要

静岡県賀茂郡松崎町から発見されたオトヒメダニ属の1新種を記載し、*Scheloribates dentatus* ト

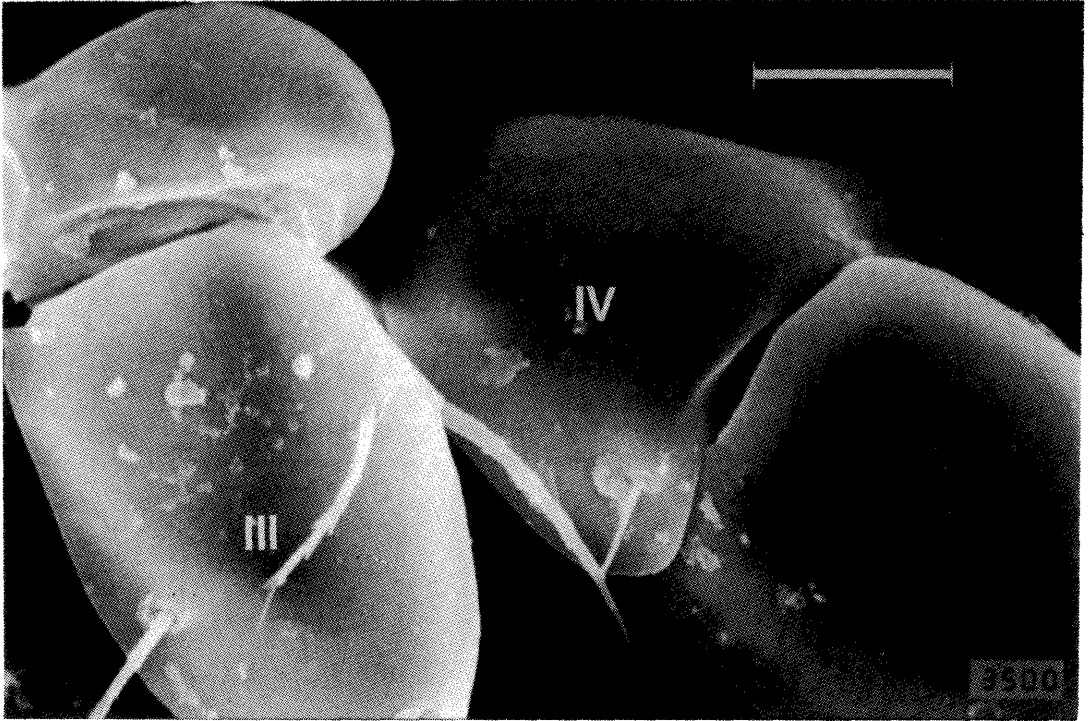


Fig. 9. *Schelorbates dentatus* sp. nov., SEM photo of trochanters and femora III and IV.
Scale, 10 μ m.

ゲアシオトヒメダニ（新称）と命名した。

本種は第4脚転節の背面先端縁に1個の顕著な歯があること、完全な *custodium* をもつこと、第1脚腿節および膝節の毛の数がそれぞれ18および2と少ないこと、そして体長が 272-304 μ m と小形であることから、他種と容易に区別される。

References

- AOKI, J., 1962. Distribution of mites in pasture soils of Japan. *Jap. J. sanit. Zool.*, **13**: 11-15. (in Japanese with English summary)
- AOKI, J., 1984. New and unrecorded oribatid mites from Amami-Oshima Island, southwest Japan. *Zool. Sci.*, **1**: 132-147.
- FUJITA, M. AND T. FUJIKAWA 1987. List and description of oribatid mites in the forest litter as materials introducing soil animals into crop field of Nayoro (II). *Edaphologia*, (36): 1-11.
- PLETZEN, R. VAN, 1963. Studies on South African Oribatei (Acarina). *Acarologia*, **5**: 690-703.
- WILLMANN, C., 1951. Untersuchungen über die terrestrische Milbenfauna im pannonischen Klimagebiet Österreichs. *Sitz.-Ber. österr. Akad. Wiss., math.-naturw. Kl., Abt. 1*, **160**: 91-176.