

東北地方のマドダニ科(ササラダニ類)の1新種

誌名	Edaphologia
ISSN	03891445
著者名	江波,義成 茅根,重夫
発行元	日本土壤動物研究会
巻/号	59号
掲載ページ	p. 1-4
発行年月	1997年8月

農林水産省 農林水産技術会議事務局筑波産学連携支援センター
Tsukuba Business-Academia Cooperation Support Center, Agriculture, Forestry and Fisheries Research Council
Secretariat



A New Species of the Genus *Suctobelbella* (Acari: Oribatei) from the Tohoku District, North Japan

ENAMI Yoshinori¹⁾ and Shigeo CHINONE²⁾

1) *Upland Farming Division, Tohoku National Experiment Station,
Arai, Fukushima-shi, 960-21 Japan*

2) *Iwainishi High School, Kamiidushima 1200-1, Iwai-shi, 306-06 Japan.*

Abstract A new oribatid species of the Genus *Suctobelbella* was collected from the Tohoku district, northern Japan. The new species is distinguishable from the other members of the genus *Suctobelbella* of the world by the pectinated lanceolate sensilli, the U-shaped indentation on rostrum and some feather-like notogastral setae, provided with 4-5 branches of diverse length. The new species stands near to *Suctobelbella pulmata* (HAMMER, 1966) n. comb. in having branching notogastral setae, but differ from the latter in the shape of rostral tip and sensillus.

Key words: new species, Fukushima, Japan, *Suctobelbella*, Oribatei

Introduction

16 species of Suctobelbidae have been reported hitherto from Japan (FUJIKAWA, T., M. FUJITA & J. AOKI, 1993). A new oribatid species, *Suctobelbella tohokuensis* is described from a crop field in the Upland Farming Division, Tohoku National Agricultural Experiment Station, Fukushima-ken, the Tohoku district, North Japan.

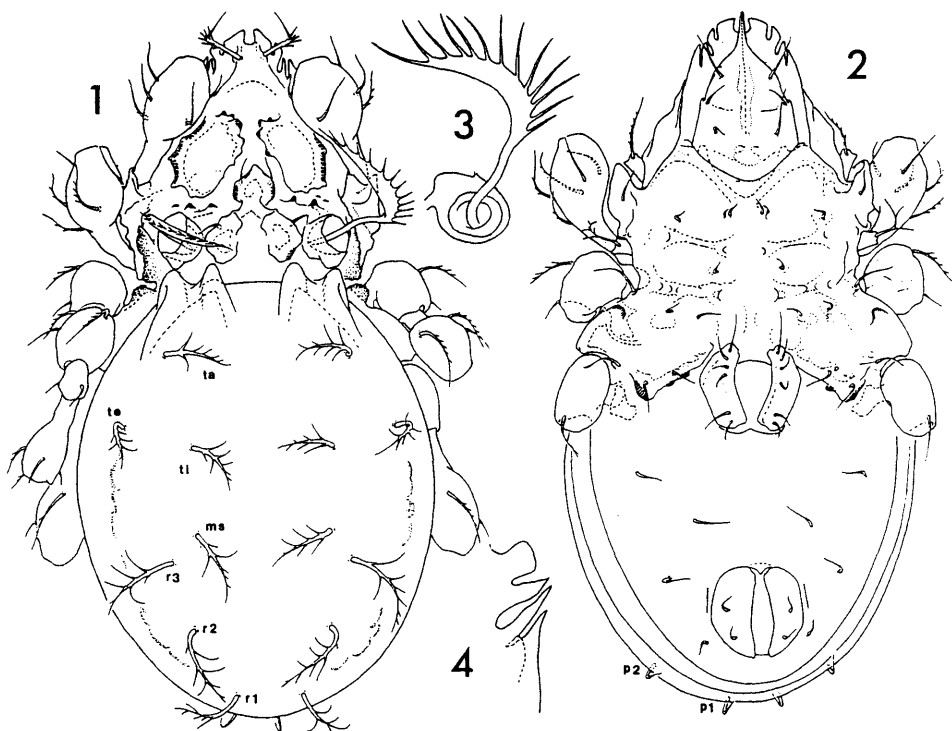
We wish to express our gratitude to Prof. Jun-ichi AOKI, Yokohama National University, for reading the manuscript.

Suctobelbella tohokuensis sp. nov.

(Figs. 1-10)

Material examined: 1 ex. (Holotype, NSMT-Ac 10776); Crop field of the Upland Farming Division, Tohoku National Agricultural Station, Arai, Fukushima-shi, 10-VI-1995. Yoshinari ENAMI. 2 exs. (paratypes, NSMT-Ac 10777, 10778), the same data as the holotype. The type series is preserved in the collection of Department of Zoology, National Science Museum, Tokyo.

Measurements (in μ m, n=3): Body length 157-174, notogastral width 75-90. Length of

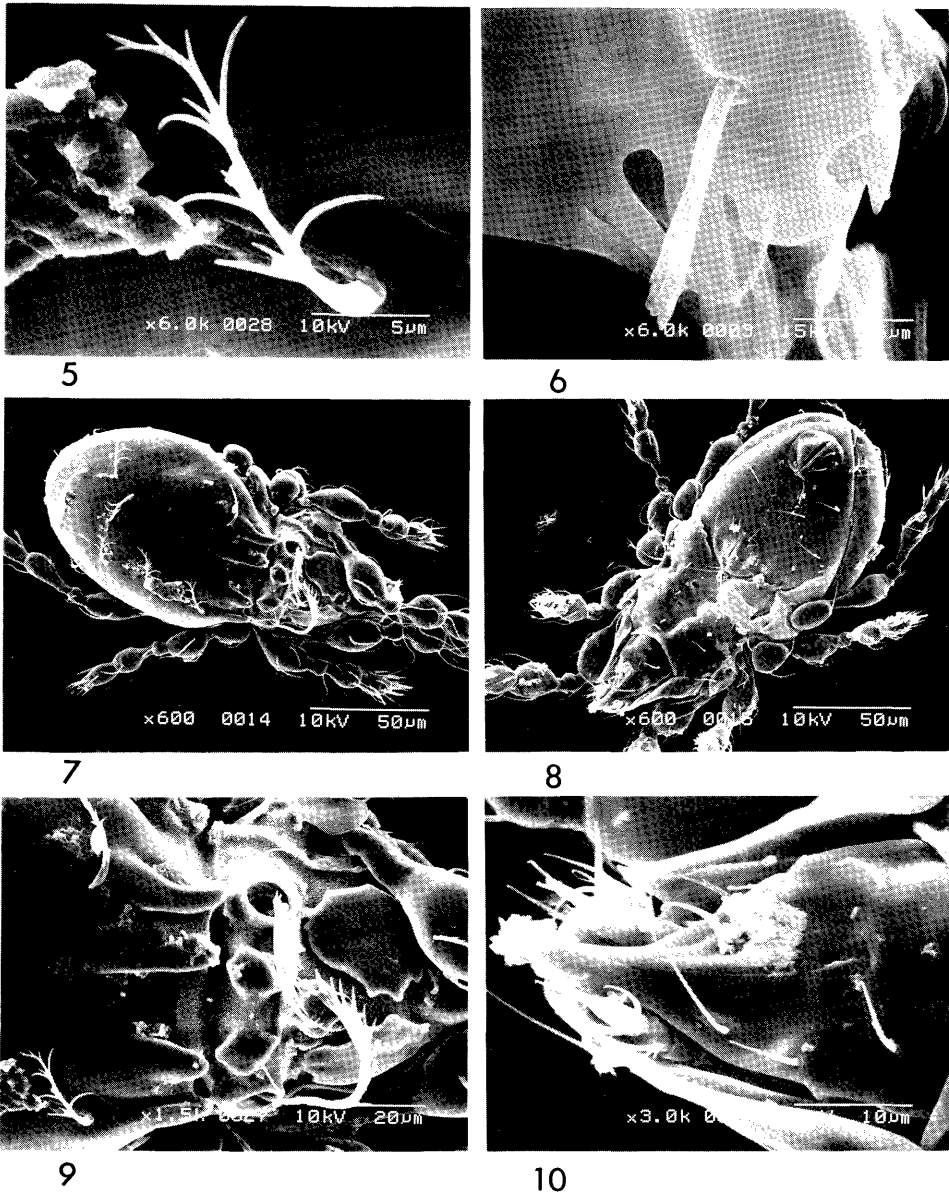


Figs. 1-4. *Suctobelbella tohokuensis* sp. nov. 1: Dorsal view. 2: Ventral view. 3: Bothridial region and sensillus. 4: Rostral teeth.

setae: la 6, ta 18, ti 19.

Prodorsum: Rostral tip with a U-shaped indentation. Rostrum has 4 pairs of teeth laterally: 1st one broadly truncate, 2nd one thick and pointed at tip, 3rd and 4th ones acute; a deep incision between 2nd and 3rd teeth. Rostral seta (*ro*) geniculate, directed antero-ventrad, bending mediad. Sculpture of prodorsum of general type. Tectopedial field rather roundish, its exterior margin defined with angular ridges. Lamellar seta (*la*) short and smooth. Lamellar knob rather pentagonal in shape. Interlamellar seta (*in*) smooth, about equal in length to *la*. Exobothridial seta (*ex*) short and smooth, directed antero-laterad. Two or three minute tubercles present between bothridium and tectopedial field. Sensillus has a fusiform head, of which external margin is arranged about 12 cilia of almost equal length. Prodorsal surface usually with cerotegment.

Notogaster: Two pairs of condyli located on the anterior margin of notogaster: lateral ones slightly longer than the inner ones. Nine pairs of notogastral setae. All notogastral setae except p-series are some feather-like, provided with 4-5 long to short branches. Setae *p*₁ and *p*₂ smooth, short and directed ventrad.



Figs. 5-10, (by SEM). *Suctobelbella tohokuensis* sp. nov. 5: Notogastral seta. 6: Dorsolateral view of rostrum. 7: Dorsal view. 8: Ventral view. 9: Dorsal view of dorsoseugugal area. 10: Ventral view of rostrum.

Ventral side: Distal part of infracapitulum beak-shaped, projecting through incision of rostral tip. Two to four pairs of small cavities located on the epimeral region. Posterior margin of epimeral region protruded posteriorly with 2-3 tubercles. Setal formula of epimerata; 3-1-3-3. Six pairs of genital setae present: setae g_1 and g_2 remote from anterior 4 genital setae. All ventral setae smooth. Discidium (*di*) distally truncated with a broad and rounded tubercle near basal part of leg III. Adanal lyrifissure (*iad*) aligned almost parallel to the lateral margin of anal aperture. Anal plate slightly longer than the genital plate.

Remarks: This new species is characterized by the shape of sensillus, the branching notogastral setae and the U-shaped incision of rostrum. This combination of characters has hitherto been unknown among its congeners. *Suctobelba pulmata* n. comb., which was described by Hammer, 1966 is similar to the new species in having branching notogastral setae. However, the latter differs from the former in the shape of rostrum and sensillus: rostral tip with no incision and the head of sensillus fusiform.

摘 要

江波義成 (東北農業試験場 〒960-21 福島市荒井字原宿南50)・茅根重夫 (茨城県立岩井西高等学校 〒306-06 岩井市上出島1200-1): 東北地方のマドダニ科 (ササラダニ類) の1新種.

Edaphologia No. 59: 1-4, 1997.

福島県東北農業試験場内の畑地からマドダニ科の1新種を記録し, トウホクマドダニ (新称) *Suctobelbella tohokuensis* sp. nov. と命名した。

この種は胴感毛の頭部の片側に約12本の長いほぼ同長の刺毛を持つこと, 及び約4~5本の不等長の枝毛のある胴背毛の形と吻端の切れ込みに特徴があり, 他の既知種と容易に区別出来る。胴背毛が似ている *Suctobelbella pulmata* (HAMMER, 1966, n. comb.)とは吻端と胴感毛の形が異なる。

References

- FUJIKAWA, T., M. FUJITA & J. AOKI, 1993. Checklist of Oribatid Mites of Japan (Acari, Oribatida). *Jour. Acaro. Soc. Japan*, 2(1): 1-121.
- HAMMER, M., 1966. Investigations on the oribatid fauna of New Zealand. *Biol. Skr. Dan. Vid. Selsk.* 15, no. 2: 1-108.